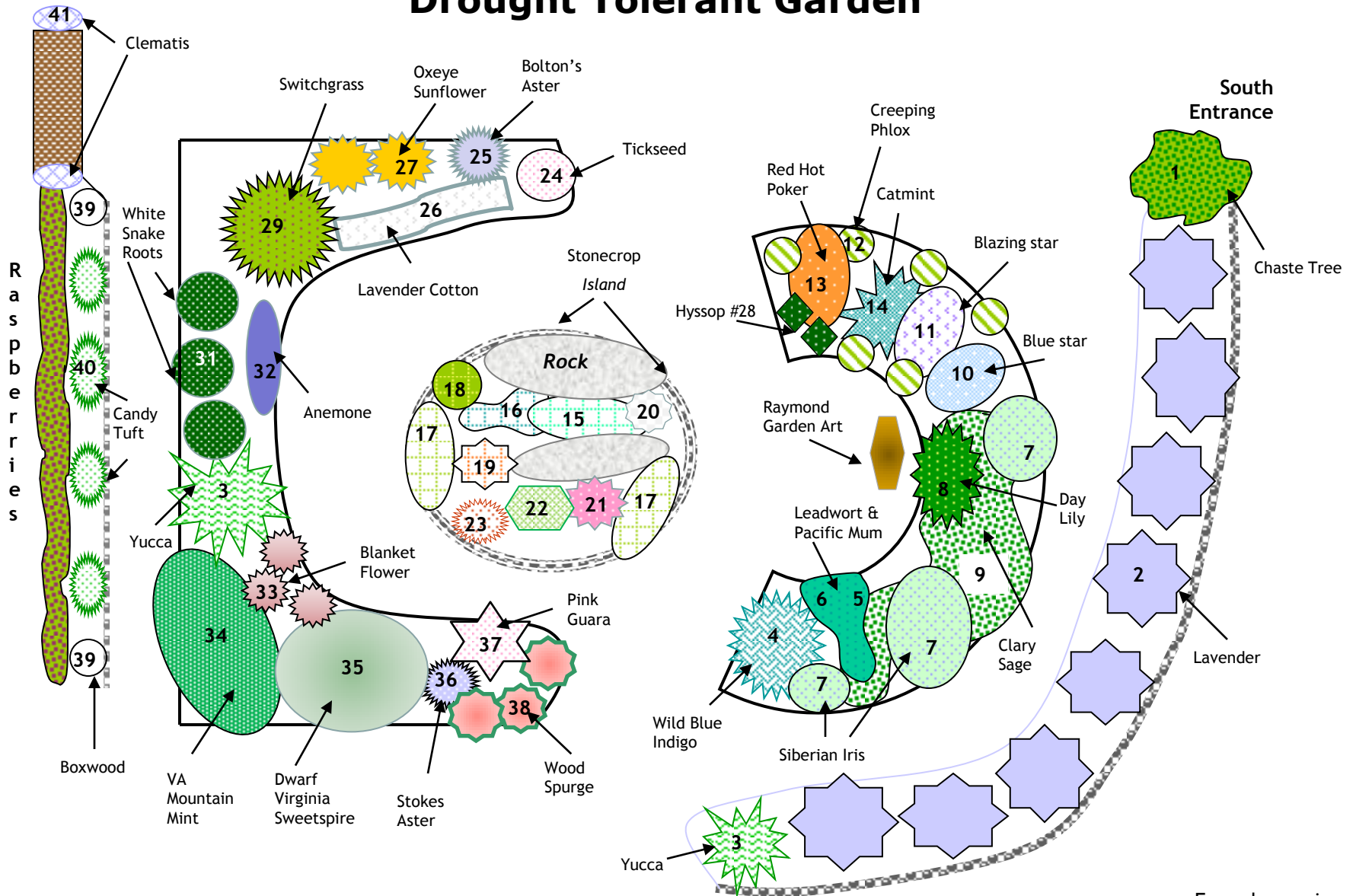


# Drought Tolerant Garden



Note: Garden subject to change from drawing due to weather, wildlife, etc.

Updated 6/11

For color copies:  
[www.loudouncountymastergardeners.org](http://www.loudouncountymastergardeners.org)

Click on Demo Garden link

# Drought Tolerant Garden Plant List

## Plant Plant ID

- |    |  |    |  |
|----|--|----|--|
| 1  | Chaste Tree <i>Vitex</i>                                       | 21 | Stonecrop <i>Sedum</i> 'Neon Pink'   |
| 2  | Lavender <i>Lavandula</i> 'Grosso'                             | 22 | Stonecrop <i>Sedum sieboldii</i>   |
| 3  | Yucca <i>Yucca</i> (VA Native)                                 | 23 | Stonecrop <i>Sedum spurium</i> 'Dragon's Blood'                            |
| 4  | Wild Blue Indigo <i>Baptisia</i> (VA Native)                   | 24 | Tickseed <i>Coreopsis verticillata</i> 'Route 66' (VA Native)              |
| 5  | Leadwort aka Plumbago <i>Ceratostigma plumbaginoides</i>       | 25 | Bolton's Aster <i>Boltonia Asteroides</i>                                  |
| 6  | Pacific Chrysanthemum <i>Ajanía pacífica</i>                   | 26 | Lavender Cotton <i>Santolina chamaecyparissus</i>                          |
| 7  | Siberian Iris <i>Iris sibirica</i>                             | 27 | Oxeye Sunflower <i>Heliopsis helianthoides</i> 'Summer Nights' (VA Native) |
| 8  | Daylily <i>Hererocallis</i>                                    | 28 | Hyssop <i>Hyssopus</i>   |
| 9  | Clary Sage <i>Salvia sclarea</i>                               | 29 | Switchgrass <i>Panicum virgatum</i> 'Shenandoah' (VA Native)               |
| 10 | Blue Star <i>Amsonia tabernaemontana</i> (VA Native)           | 31 | White Snake Root <i>Eupatorium Rugosum</i> 'Chocolate'                     |
| 11 | Blazing Star <i>Liatrus spicata</i> (VA Native)                | 32 | Poppy Aneomone Bulb <i>Anemone coronaria</i>                               |
| 12 | Creeping Phlox <i>Phlox stolonifera</i> (VA Native)            | 33 | Blanket Flower <i>Gaillardia artistata</i>                                 |
| 13 | Red Hot Poker <i>Kniphofia uvaria</i> <i>Flamenco</i>          | 34 | Virginia Mountain Mint <i>Pycnanthemum virginianum</i> (VA Native)         |
| 14 | Catmint <i>Nepeta</i>  | 35 | Dwarf Virginia Sweetspire <i>Itea virginica</i> 'Merlot'                   |
| 15 | Stonecrop <i>Sedum kamtschaticum</i> var. <i>ellacombeanum</i> | 36 | Stoke's Aster <i>Stokesia laevis</i>                                       |
| 16 | Stonecrop <i>Sedum telephium</i> 'Aquarel'                     | 37 | Pink Guara <i>Guara lindheimeri</i> 'Siskiyou Pink'                        |
| 17 | Stonecrop <i>Sedum kamtschaticum</i>                           | 38 | Wood Spurge <i>Euphorbia</i> 'Ascot Rainbow'                               |
| 18 | Stonecrop <i>Sedum telephium</i> 'Ruby Glow'                   | 39 | Boxwood <i>Buxus suffrutucosa</i>  |
| 19 | Stonecrop <i>Sedum telephium</i> 'Autumn Joy'                  | 40 | Candy Tuft <i>Iberis umbellata</i>   |
| 20 | Stonecrop <i>Sedum</i> 'Thundercloud'                          | 41 | Clematis: Montana Rubens and Sunset  |